

Windows

Doors

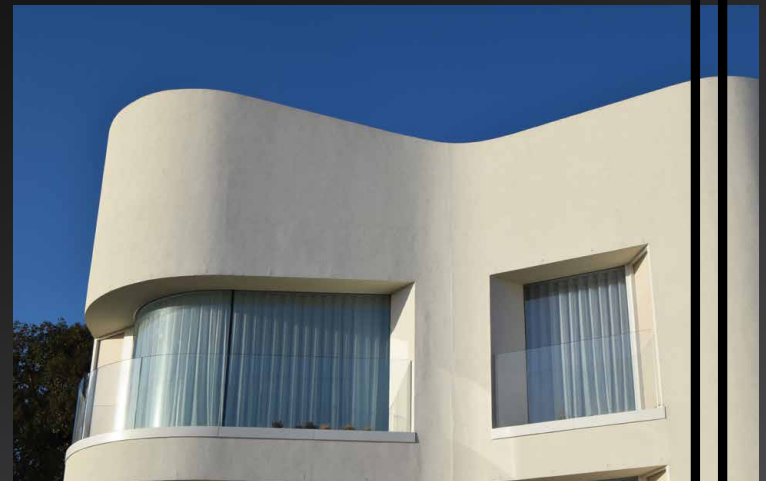
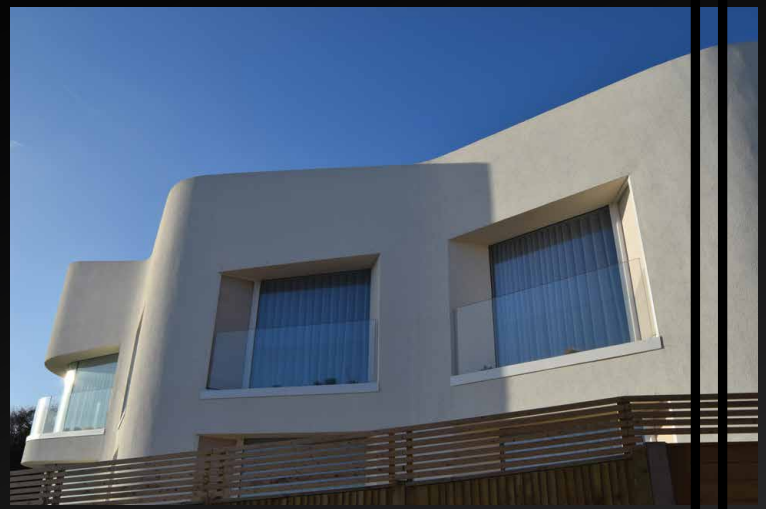
Curtain walling /  
Ground floor treatment

Rainscreen cladding

Solar shading

Atriums, roofs  
and canopies

Bespoke glazing  
and ancillary items



## Project profile

Project: Ness Point House, St Margaret's Bay  
 Architect: [Not specified]  
 Contractor: Coombs (Canterbury) Ltd  
 Value: £31k  
 Products: Velfac timber/aluminium composite windows,  
 Bespoke curved sealed units

# Prima

## Integrated Facade Solutions