

Windows

Doors

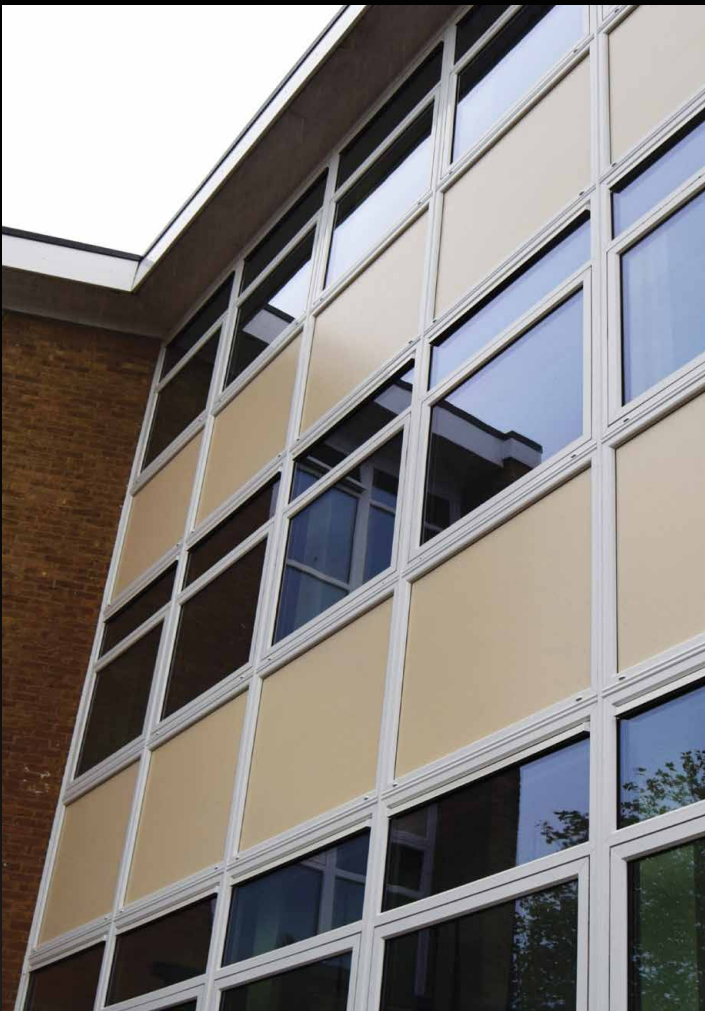
Curtain walling /
Ground floor treatment

Rainscreen cladding

Solar shading

Atriums, roofs
and canopies

Bespoke glazing
and ancillary items



Project profile

Project: Canterbury Academy
 Architect: Prima Systems
 Contractor: Prima Systems
 Value: £446k
 Products: Rehau Total 70 windows
 Sapa Glostal 202 commercial doors
 HP200 Leathergrain steel faced insulated panels

Prima

Integrated Facade Solutions