



Education Services

Helping to transform the learning environment

Prima

Integrated Facade Solutions

The Integrated Facade Solution for your Education project



Windows



Doors



Curtain walling



Rainscreen cladding



Solar shading



Roof glazing



Balustrades, atriums & canopies



Ancillary items

Helping to improve the learning environment

Prima Systems has gained a strong reputation for its work in the education sector over the last 40 years having delivered a wide range of both refurbishment and new-build projects; from window and door replacement projects and full façade refurbishments to a fully integrated approach on a new building's glazing and cladding installations.

A wide range of complementary services are available when you choose Prima as your glazing and cladding contractor on your project so you can be assured of our continued support throughout the entire process. We are known for providing transparent pricing, comprehensive technical advice, value for money and quality products that together form excellent working relationships that keep our clients coming back time after time.



CIF Bid Assistance: get a clearer view

Following an in-depth site survey by our experienced consultant, a comprehensive technical report is produced that outlines the current condition of the building's façade including the current failings and performance limitations. It will reinforce the consequences of non-remediation and provide our recommendations for improvement.

The report is designed to strengthen CIF, Salix and other funding applications and is suitable for condition or expansion projects.

The Analysis

Façade condition report and survey detailing current conditions and failings in regards to health and safety

- Ventilation issues including a CO² air quality survey recorded via remote monitoring
- Thermal comfort including energy calculations to analyse the existing performance
- Structural integrity
- Water penetration problems
- Window/door operational assessment
- Compliance concerns relating to current regulations with clear, visual evidence
- Security implications
- General appearance and usability issues
- Conclusion and recommendations

The Bid Preparation

- Full project overview including programme, deliverability and value for money indications
- Cost summary for different improvement options
- Façade design drawings and specification documents
- Warranties and guarantees to ensure peace of mind and reliability on the investment

Would your CIF bids benefit from our technical expertise?

Call the team today on **01304 842999**

or email enquiries@primasystems.co.uk

or visit www.primasystems.co.uk/cif

Canterbury Academy Refurbishment

Architect: Prima Systems **Contractor:** Prima Systems
Value: £446,000
Products: Rehau Total 70 windows, Sapa Glostal 202 commercial doors, HP200 Leathergrain steel faced insulated panels



Case study:

Prima's support secures CIF funding for facade transformation at Canterbury Academy

In November 2015 the team at The Canterbury Academy were preparing to submit their EFA funding bid application for improvements to the main building on the campus. In order to strengthen the technical side of the application the school requested a detailed façade investigation report from Prima Systems.

The report is designed to assess the general condition of the existing external façade and where possible provide advice on improvements. It also highlights any health and safety failings as well as non compliant elements on the building.



The Problems

Over 90% of the existing façade was constructed from Crittall style windows fixed between structural vertical wind posts, forming a fully glazed curtain wall screen.

The façade investigation report raised several major concerns – over 60% of the windows exhibited warped sashes resulting in draughts and heat loss, over half of the windows had missing putty beads and around 20% of the window panes were broken. There were also clear signs of water penetration and the fire breaks to the existing floor slabs were missing. Ventilation calculations also revealed that there was insufficient ventilation in the classrooms.

The report concluded that the continued rectification works were no longer practical or financially viable so a long term solution was needed.

Due to the extent of the current failures and concerns about the current façade a full replacement programme was recommended as the only long term and cost effective solution to ensure that all current issues were successfully resolved.

The Solution

The design solution was to insert a steel reinforced PVCu double glazed curtain wall window system between the existing structural steel Crittall window mullions. The Rehau Total 70 PVCu window system was then inserted in between the steel mullions with solar control glass added to minimise solar heat gain and help control glare. Platisol HP200 steel insulated panels were added to improve the overall thermal and visual performance of the façade. Glazed in vents were also incorporated in the design in order to meet the BB 101 ventilation requirements.

The Installation

In December 2015 it was announced that the funding bid was successful and the school had secured the funding for the façade refurbishment.

Prima Systems were contracted to work directly with the school - removing the need to appoint a main contractor to oversee the work. This allowed for a more streamlined service delivery as well as reducing the project management costs in the already limited budget.

The work was split into two phases - the first taking place while the school was still open and exams were taking place. In order to minimise the disruption caused to the students and teaching staff, the team were contracted to work out of normal school hours beginning at 3pm before clearing the site by 12am ready for the new school day.

Once the summer holidays had begun a normal working schedule was implemented.

The work to the main façade was complete by the start of the new school year with additional work to other elevations being completed over the October half term.

Canterbury Academy - Phase 1

New build

Architect:	OSG Architecture	Contractor:	BEC Construction Ltd
Value:	£100,000		
Products:	Sapa Dualframe 75 Si windows, Sapa Stormframe STII doors, Sapa Elegance 52 curtain walling		



Finberry Primary School

New build

Architect: Bond Bryan Architects **Contractor:** Morgan Sindall
Value: £220,000
Products: Sapa Dualframe 75 Si windows, Sapa Elegance 52 curtain walling, Jack Aluminium TD-68 commercial doors, Renson 415 glazed in louvre panels



With thanks to Morgan Sindall for the use of the images

Norton Knatchbull School

Phase 1 - refurbishment

Architect:	Roberts Limbrick Ltd	Contractor:	Kier Group plc
Value:	£250,000		
Products:	Sapa Building Systems Dualframe 75 windows, Jack Aluminium TD-68 doors, Sapa Elegance 52ST curtain walling		



Norton Knatchbull School

Phase 2 - refurbishment

Architect: Roberts Limbrick Ltd
Value: £716,000
Contractor: Logan Construction
Products: Sapa Dualframe 75 casement windows, Sapa Stormframe STII doors, Sapa Elegance 52 curtain walling, Cladding panels: 6mm Steni Colour, 8mm Rockpanel Xtreme, 8mm Trespa Meteon



The Abbey School

Refurbishment and new build

Architect: Owen Shepherd Gee **Contractor:** Coombs (Canterbury) Ltd
Value: £795,000
Products: Rehau Total 70 windows, Senior Architectural Systems SCW+ curtain walling, Fundermax cladding panels





Case study:

Prima's value engineering solution gives The Abbey School a new look

Programme & logistic solution

Following the appointment of Prima Systems as the façade contractor for the project the team were keen to make progress as quickly as possible mindful that the agreed completion date for the funding was only 6 months away.

In order to avoid any delays it was agreed that the survey works would be carried out using MEWP's (Mobile Elevating Work Platforms) and undertaken outside of school hours. This was a preferable solution to a potential delay while scaffolding was erected.

The original plan had been for the work to be undertaken at night as with most large scale school works but planning application restrictions prevented this. With the works now being carried out during the school day it became apparent that the success of the project would rely on impeccable project management and communication.

Correct scheduling was vital to enable the work to progress smoothly and, more importantly, with minimum disruption to the day to day running of the school.

Replacement works were undertaken from an external scaffold which was enclosed to reduce noise pollution to the surrounding residential areas as well as offering additional weathering to make sure the work was not impeded or delayed.

Design solution

The original design proposal was to over clad the entire building façade, however after further discussion it was clear that this option far exceeded the project's budget.

With the project in doubt, it was up to Prima's experienced team to develop an original solution. By retaining the existing structural steel Crittall window mullions it was possible to insert a steel reinforced PVCu double glazed curtain wall window system between the steel mullions to form a new high performance building façade.

This solution ensured the project was completed on time and to the agreed budget.

Maidstone Grammar Sports Hall

New build

Architect: Graham Carter Associates **Contractor:** W W Martin Ltd
Value: £35,000
Products: Sapa Dualframe 75 windows, Sapa Elegance 52 curtain walling, Jack Aluminium TD-68 commercial doors



With thanks to W W Martin Ltd for the use of the images

Repton Manor Primary School

New build

Architect:

Cattell Skinner Design Partnership

Contractor: Apollo Education

Value:

£325,000

Products:

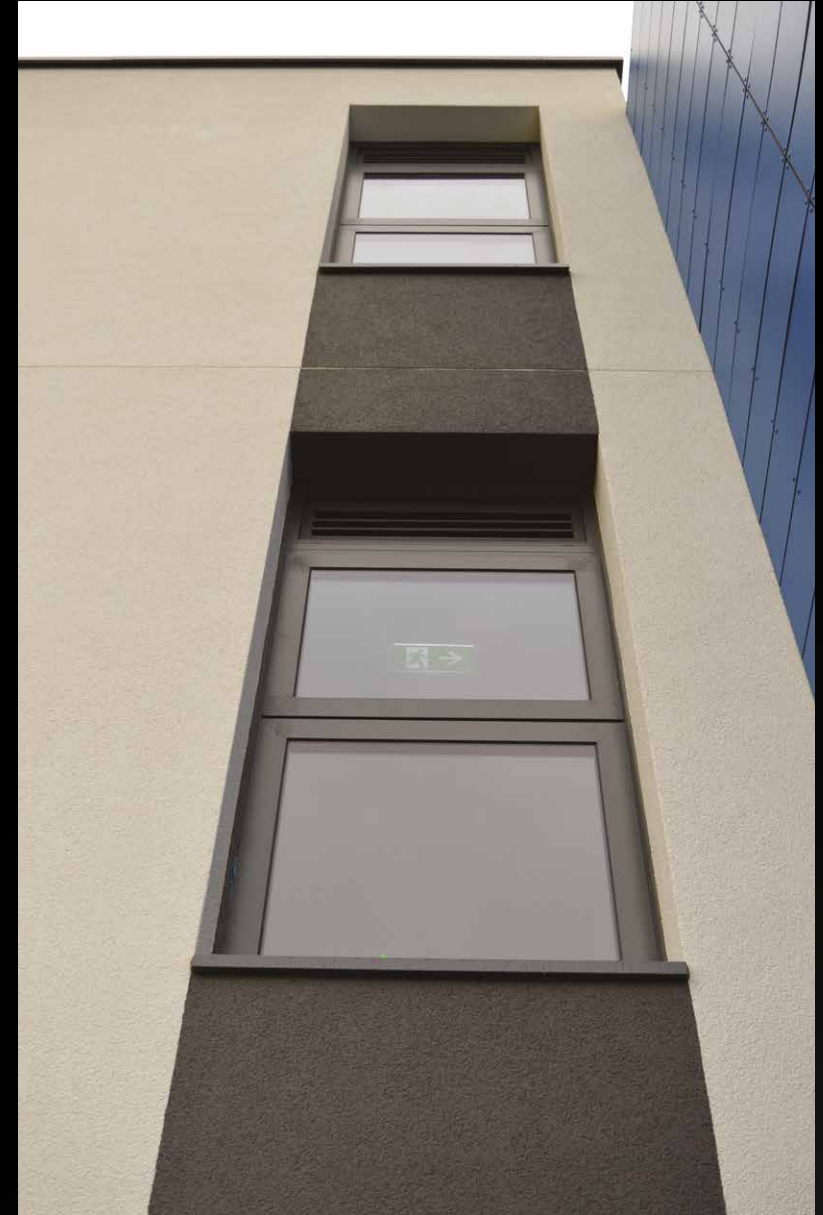
Sapa Dualframe 75SI windows, Sapa ST commercial doors, Senior Architectural Systems SCW+ curtain walling, Sunflex sliding doors



Laleham Gap School, Margate

New build

Architect: Ellis Williams Architects **Contractor:** Wates Construction
Value: £320,000
Products: Sapa Dualframe 75 windows, Sapa Elegance 52ST curtain walling, Jack Aluminium TD-68 doors



Canterbury Primary School

New build

Architect: Ellis Williams Architects **Contractor:** Wates Construction
Value: £176,000
Products: Sapa Dualframe 75 windows, Jack Aluminium TD-68 doors, Sapa Elegance 52ST curtain walling



I would like to thank you and your team for the excellent work that has been undertaken. Your careful planning and the excellent management of the teams of staff completing the work has meant that the disruption to the school has been kept to a minimum. The resulting windows have transformed the classrooms by making them appear more modern and also by ensuring that the heat loss has been reduced.

Mrs Maggie Bolton (Head Teacher), Wilmington Grammar School for Girls

This project was a mix of new-build, re-model and refurbishment works all conducted within a live school on an extremely challenging site both logistically and geographically. At all stages of the works - from the intensive and unwavering design input and resolution of issues, the robust logistics planning and execution, meeting programme deadlines, working with and alongside other trades, quality of workmanship and positive, solid support - I cannot praise Prima Systems highly enough. Extremely good relationships were built and maintained and I would have no hesitation at all in using Prima Systems on the next project in which I am involved and recommending them to other contractors.

Ben Fletcher (Project Manager), St Aloysius College - Balfour Beatty

Prima Systems (SE) Ltd

The Old Malt House, Easole Street
Nonington, Dover, Kent CT15 4HF

T: 01304 842999

www.primasystems.co.uk

enquiries@primasystems.co.uk

Prima

Integrated Facade Solutions