



Design
Supply
Install

Prima

Integrated Facade Solutions

Prima Systems specialise in the design, supply and installation of high performance facade solutions throughout the South East

- > Windows and doors
- > Curtain walling and ground floor treatment
- > Rainscreen cladding
- > Solar shading
- > Glazed roofs, atriums and canopies
- > Bespoke glazing and ancillary items



For over 40 years the Prima name has been synonymous with quality façade installations and exceptional client service.

Prima Systems aim to provide a comprehensive range of façade products including an extensive selection of windows, doors, curtain walling and ground floor treatment, solar shading, glazed atriums, roofs and canopies as well as the newly launched range of rainscreen cladding systems. Prima's experience covers a broad range of projects working within both the refurbishment and new build markets.

Our network of suppliers allows us to source the correct product to compliment your project. Available systems include Sapa, Senior, Kommerling, Rehau, Rationel, Renson, Rock Panel and Metal Technology.

We pride ourselves on the support network we offer to our clients. We have developed the knowledge and experience required to interpret designs into practical and workable installation solutions that meet the specifications required. So whether you are an architect, quantity surveyor or contractor, you can rest assured you have dedicated support from the early design phase through to the final installation.

Project: Canterbury Innovation Centre
Architect: RH Partnership
Contractor: Morgan Ashurst
Value: £512,000
Products: Sapa 202 commercial doors
Sapa Dualframe window inserts
Senior Architectural Systems SCW curtain walling

The integrated façade solution - helping to streamline the construction process



Rainscreen cladding

Suppliers: Trespa, Marley Eternit, Rockpanel, Formica, Elements, Kingspan, Steni, Parklex, Alucobond (aluminium), Fundermax, Sto



Solar shading

Aluminium: Metal Technology, Renson, Kawneer, Reynaers, Sapa, Colt, Levolut

Styles: aerofoil, clips, fixed, moveable, horizontal, vertical, cassette

Bespoke glazing and ancillary items

Balustrades
Copings
Flashings
Downpipes / Rainwater gullies
Pods



Curtain walling and ground floor treatment

PVCu: Rehau, Veka/Halo

Aluminium: Sapa, Senior Architectural Systems, Reynaers, Metal Technology, Kawneer, Schuco, Comar, Aluprof, AluK

Aluminium/timber composite: Senior Architectural Systems

Styles: stick, ladder, low rise, high rise, capless (silicone glazed, toggle), horizontal feature caps



Atriums, roofs, canopies and balustrades

Aluminium: Vitral, Perspective (Living Daylight), bespoke designs



Windows and doors

PVCu: Rehau, Kommerling, Veka/Halo, Profile 22, Eurocell

Aluminium: Sapa, Senior Architectural Systems, Smart, Jack, Metal Technology, Kawneer, Schuco, Reynaers, Comar, Aluprof, AluK

Aluminium/timber composite: Velfac, Rationel, Senior Architectural Systems

Timber: Rationel

Steel: Crittall / Prima Doors

Styles: outward opening, inward opening, tilt & turn, reversible, horizontal and vertical sliding, parallel push out. Lift & slide and bi-fold doors are also available. DDA compliant and fire rated doors can be provided. Automation and finishes can be included as part of the overall glazing installation



Project: Summit Aviation, Ramsgate
Architect: The Duncan & Graham Partnership
Contractor: G S E Construction
Value: £172,000
Products: Senior Architectural Systems
SMR800 curtain walling



Our work in the commercial sector covers a wide variety of projects including office buildings, business centres, warehouses, restaurants and shopping centres where design and functionality are key. The extensive range of façade products available allow us to undertake projects; from large new build developments to complex refurbishments.

Residential

Project: Folkestone
Architect: Guy Holloway Architects
Contractor: Coombs (Canterbury) Ltd
Products: Installation of composite windows and doors



Images © 2016 Mike Waterman and Guy Holloway Architects

The residential sector presents an array of options; from high specification finishes on bespoke homes to the restricted budgets of large-scale housing developments. Our experienced estimating team can tailor our product range to suit a variety of requirements to ensure the project can be realised within the agreed budget.



Images © 2016 Jonathan Dunn Architects and Oliver Perrott



Images © 2016 Harriss Property and Guy Holloway Architects

Social Housing

Project: Kent History Centre, Maidstone
Architect: Fluid Design
Contractor: Warings Contractors Ltd
Value: £549,000
Products: Rehau Total 70 windows
Sapa Glostal 202 Commercial Door
Senior Architectural Systems
SMR800 curtain walling
Schuco fire rated entrance doors
Besam Powerswing automatic doors



Prima have an excellent reputation and an extensive track record in providing services for affordable housing developments. We are a leading provider to this sector and have vast experience working as both a subcontractor to a local or national contractor or directly with local authorities.

Our solution focused approach has proved to be extremely successful in achieving both client and project objectives in refurbished developments.

Leisure



Project: Clapham One Leisure Centre
Architect: LA Architects Ltd
Contractor: Morgan Sindall
Value: £450,000
Products: Sapa Elegance 52 curtain walling
Terracotta baguettes



Prima's experience in the leisure sector includes hotels, art galleries, museums, golf clubs and sports centres. The wide spectrum of both functional and aesthetic requirements for each building type is accommodated using carefully considered bespoke solutions.



Project: Abbey School, Faversham
Architect: Owen Shepherd Gee
Contractor: Coombs (Canterbury) Ltd
Value: £850,000
Products: Rehau Total 70 windows
Fundermax cladding
Senior Architectural Systems
SCW+ curtain walling



Technical expertise coupled with continued investment into the research and development of innovative solutions has placed Prima at the forefront of advancements in the education sector.

We understand the unique challenges associated with the education sector and are able to offer out of hours working to minimise disruption to the students.

Student Accommodation



Project: Medway Halls, Chatham
Architect: GDM Architects
Contractor: Provian Construction
Value: £192,000
Products: Sapa Dualframe 75 windows
Sapa Dualframe 75 doors
Glostal 202 doors



The student accommodation sector has undergone significant changes in recent years with more demand for a modern, fresh appearance whilst still delivering the same high performing criteria.

Prima Systems have successfully completed works on many halls of residence in University towns in the South East and further afield. We can deliver façade solutions on either new-build or refurbished buildings with a wide range of options that are both flexible and cost effective.

Public Buildings



Project: Kent History & Library Centre, Maidstone
Architect: Fluid Design
Contractor: Warings Contractors Ltd
Value: £549,000
Products: Rehau Total 70 windows
Senior Architectural Systems
SMR800 curtain walling
Sapa Glostal 202 commercial doors
Schuco fire rated entrance doors
Besam Powerswing automatic doors



Public building projects are subject to unique demands and strict regulations. Safety and efficiency are of the utmost importance however the budget and handover dates are equally crucial.

Our capabilities in the public sector are reinforced by the renewal of our ISO 9001 accreditation proving that we consistently deliver outstanding installations whilst our integrated approach to the project management ensures we deliver on time and within budget.

Retail



Project: Wren Kitchens and Halfords, Westwood Cross
Architect: RGP Architects
Contractor: Coleman & James
Value: £85,000
Products: Senior Architectural Systems SCW+ curtain walling
Besam automatic doors
Record automatic doors

Consumer experience is paramount in retail buildings. The desire to create bright, eye-catching window displays to entice customers into the stores is vital to stand out from the crowd.

Our connections with suppliers allow us to create bespoke solutions to make sure the aesthetic and technical expectations are met or even exceeded.



Healthcare



Project: Horder Centre, Crowborough
Architect: Building Ideas Architects
Contractor: BBS Construction
Value: £144,000
Products: Senior Architectural Systems SCW+ curtain walling
Sapa Dualframe 75 windows
Sapa 202 commercial doors
Senior Architectural Systems SPW500 doors

The healthcare sector can present many challenges. The stringent regulations require a higher level of coordination in order to achieve the uncompromising healthcare standards.

Our knowledgeable team utilise their experience in hospitals, oncology units, surgeries and pharmacies to guarantee a high performing durable solution is delivered.



Why choose Prima?

Years of experience

Established in 1972 Prima Systems has a long history of delivering solutions to the construction industry. The experience gained from each and every project during this time enables us to fully understand and adapt to the challenging aspects each new job presents.

Long serving team

Our loyal and dedicated team boast a combined service at Prima of over 150 years which demonstrates a collective commitment to the company's success. Monthly company meetings mean that all staff members are fully informed on the status of each project and the overall performance of the company and all departments hold regular progress meetings and reviews to promote consistency in our service delivery.

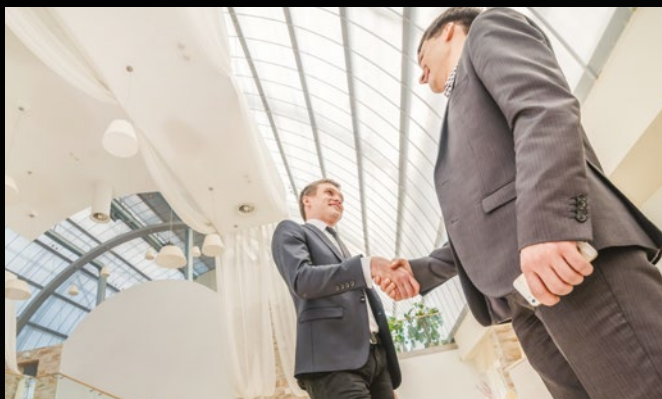
Strong guiding principles

At Prima every member of the team follows our 3pki guiding principles – pride, passion, professionalism, knowledge and initiative. These core values are underpinned by the extensive knowledge and experience we have of the industry enabling us to deliver impeccable service to every client and supplier.



Returning clients

Our long list of returning clients is a reflection of the consistent service we offer. Some of the UK's largest contractors turn to Prima to collaborate on their projects confirming that the advice and support they receive as part of our service is a key reason they continue to choose us year after year.



Strong partnerships

We strive to build strong working relationships with our network of supplier partners. All suppliers are internally rated to give us the confidence that the products we procure and the services they deliver are appropriately tested and will stand the test of time.

Accurate, detailed estimates

Unlike many other estimating departments we prefer to be upfront about the potential costs involved from the early stages of the project. We carefully consider each individual element of the installation including the acoustic, thermal and security requirements and create a detailed quotation to provide you with a realistic expectation of the fees, reducing the likelihood of additional costs and confusion occurring as the project moves into the construction phase.



In-house team of Designers and Project Managers

Instead of relying on a group of subcontractors to carry out our work we have a fully trained in-house team of designers and project managers giving us total project control and the added flexibility of drawing on additional resources if a project requires extra attention to meet the project time frames.

Ever expanding product range

Due to the strong links we maintain with our system suppliers we are able to source new and innovative products to meet the requirements of a project. The introduction of rainscreen cladding systems means we can offer the full package with our integrated façade solution. We aim to streamline the whole process by giving you one point of contact for the entire external façade.

Insured and accredited

We hold Professional Indemnity Insurance of £5 million providing you with peace of mind when working with Prima. We are fully accredited as detailed below:



Fully qualified site teams

Our teams of installers are all fully trained, hold CSCS cards and are DBS checked. We also hold certificates for other vital training schemes including Asbestos Awareness, IPAF, PASMA and CITB (SSSTS and SMSTS). Our in-house training areas allow our operatives to be fully aware of the intricacies of each system we install.



Out of hours working

We understand that not all projects can follow the same standard procedure of construction so we are able to offer out of hours working to minimise the disruption for tenants or students.

Post installation support

Experience tells us that regular maintenance and servicing extends the life of system components and allows clients to realise the maximum return on their investment.

Service maintenance agreements can be put in place to make sure the products continue to deliver long after the installation and handover.

Kent County Council approved installer

As a KCC approved contractor you can be assured of the quality of our products and services.



Supplier Partnerships

We are preferred installers for many system manufacturers. Our product range includes:

- | | | |
|--------------|-------------------------|---------------------------------|
| > Alucobond | > Marley Eternit | > Senior Architectural Systems |
| > Aluprof | > Metal Technology | > Smart Architectural Aluminium |
| > AluK | > Parklex | > Steni |
| > Comar | > Profile 22 | > Sto |
| > Elements | > Rational | > Swish |
| > Eurocell | > Rehau | > Trespa |
| > Fundermax | > Residence 9 | > Veka |
| > Jack | > Reynaers | > Velfac |
| > Kawneer | > Rock Panel | > Vitral |
| > Kingspan | > Sapa Building Systems | |
| > Kommerling | > Schüco | |



Case study: Prima's value engineering solution gives Abbey School in Faversham a new look

Programme & logistic solution

Following the appointment of Prima Systems as the façade contractor for the project the team were keen to make progress as quickly as possible mindful that the agreed completion date for the funding was only 6 months away.

In order to avoid any delays it was agreed that the survey works would be carried out using MEWP's (Mobile Elevating Work Platforms) and undertaken outside of school hours. This was a preferable solution to a potential delay while scaffolding was erected.



Before

The original plan had been for the work to be undertaken at night, as with most large scale school works, but planning application restrictions prevented this. With the works now being carried out during the school day it became apparent that the success of the project would rely on impeccable project management and communication.

Working closely with the team at the school, great attention to detail was given to the preparation and upkeep of the programme of works. Correct scheduling was vital to enable the work to progress smoothly and, more importantly, with minimum disruption to the day to day running of the school.

Replacement works were undertaken from an external scaffold which was completely enclosed to reduce noise pollution to the surrounding residential areas as well as offering additional weathering to make sure the work was not impeded or delayed.



Design solution

The original design proposal was to over clad the entire building façade, however after further discussion it was clear that this option far exceeded the project's budget.

With the project in doubt, it was up to Prima's experienced team to develop an original solution. By retaining the existing structural steel Crittall window mullions it was possible to insert a steel reinforced PVCu double glazed curtain wall window system between the steel mullions to form a new high performance building façade. This solution ensured the project was completed on time and to the agreed budget.

| | |
|--------------------|--|
| Project: | Abbey School, Faversham |
| Architect: | Owen Shepherd Gee |
| Contractor: | Coombs (Canterbury) Ltd |
| Value: | £850,000 |
| Products: | Rehau Total 70 windows Fundermax cladding |



Case study: A room with a view - Margate's Promenade is transformed

Programme & logistic solution

Prima Systems were contracted to design, supply and install the external glazing package on nine two storey and two single storey 'beach houses' on Margate Promenade working with local contractor W W Martin Limited.



The two-bedroom residential units boast uninterrupted views of the North Sea so the main sea facing façade is designed with full height glazing to maximise the view.



Design solution

The design originally specified an almost frameless glass façade however the costs proved to be too high. Prima were tasked with designing a solution that would reduce the overall glazing package by 40%.

Using the Sapa Dualframe 75 thermally broken range of profiles supplied by our local fabrication partner; Wynda Components, a solution was found. A combined system of full width windows and double doors was installed on the lower floor, while the first floor level of each unit has a full height glazed apex screen with double doors.



| | |
|--------------------|--|
| Project: | The Beach Houses, Margate |
| Architect: | Guy Hollaway Architects |
| Contractor: | W W Martin Ltd |
| Value: | £96,000 |
| Products: | Sapa Dualframe 75Si windows Sapa Dualframe 75 doors |

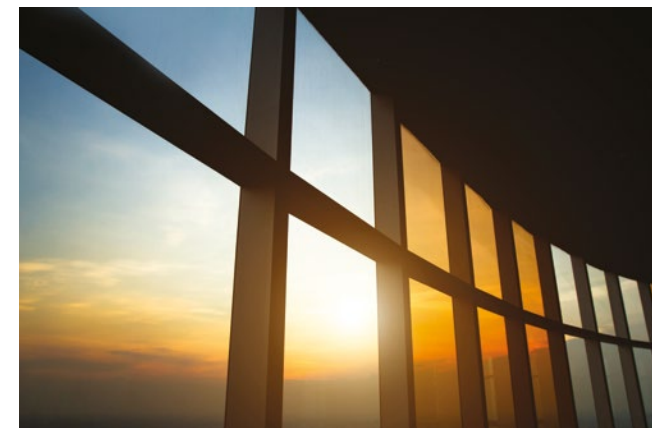
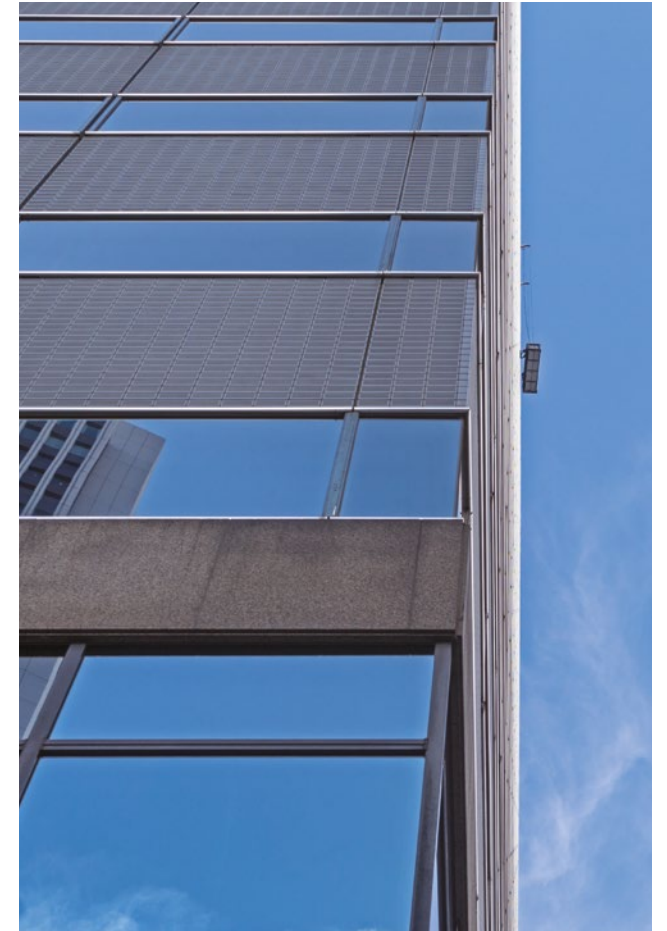
Sustainability Commitment

We aim to be a catalyst for change. We use our knowledge and experience to influence product choice and activities that can make a difference, create change and have a positive environmental impact.

We see sustainability as a way to continuously improve our business practices. We seek to promote change within our clients and supply chain through a culture of partnership and collaboration.

*“Leading by example
to help create a more
sustainable future”*

- Adoption of the 3R's Principle
 - + Reduce
 - + Reuse
 - + Recycle
- Sustainable product range
- Alternative sustainable project solutions
- Environmental impact recommendations
- Thermal modelling advice
- Proactive waste recycling



Prima Systems (SE) Ltd

The Old Malt House, Easole Street
Nonington, Dover, Kent CT15 4HF

T: 01304 842999

www.primasystems.co.uk

enquiries@primasystems.co.uk

Prima

Integrated Facade Solutions